

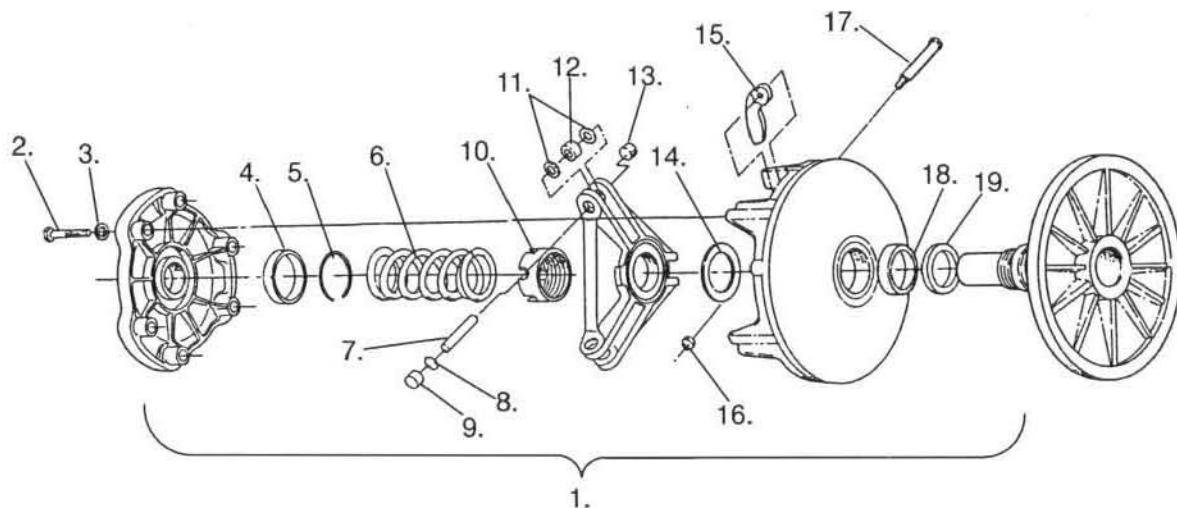
TORQUE-O-MATIC DRIVE Data

1995 PRODUCTION SETUP									
Machine Model	Engine Model	Operating RPM \pm 200	Production Clutch Part No.	Spring Color, Wire Dia.	Shift Wt. I.D./Gram	Bore Taper Diameter	Clutch Center Distance	Driven Helix Angle & Location	Chaincase Gearing
StarLite	EC25PS07	6300	1321599	Orange .196	10M Red	1.160	12.24"	36.5° B-2	15:41
Indy Lite/GT Lite Deluxe	EC34-2PM02	7000	1321601 1321602	Silver/Gold .218	10	1.160	11.030"	36.5° B-2	16:39
Sport Sport Touring	EC44-3PM01	6800	1321594	Brown .200	10	1.160	12.00"	36.5° B-2	16:35 16:39
Super Sport	EC44-3PM02	7000	1321619	Red/White .192	10AL Bushed	1.160	12.00"	36.5° B-2	17:35
Trail	EC50PM04	7000	1321570	Red/White .192	10AL Bushed	1.190	12.00"	36° #2	21:39
Trail Deluxe	EC50PME04	7000	1321592	Red/White .192	10AL Bushed	1.190	12.00"	36° #2	20:39
WideTrak GT	EC50PM03	6600	1321583	Brown .200	10 Bushed	1.190	12.00"	36° #2	19:41
WideTrak LX	EC50PL06	7000	1321583	Brown .200	10 Bushed	1.190	12.00"	36° #2	19:41
440 Indy 440 SKS	EC45PL02	8000	1321580	Gold .207	10 MB Bushed	1.190	12.00"	34° #2	21:39 20:39
440 XCR	EC45PL05	8250	1321643	Blue .207	10 MB Bushed	1.190	12.00"	34° #2	21:39
Indy 500	EC50PL04	7750	1321569	Gold .207	10MB Bushed	1.190	12.00"	36° #2	21:39
Classic	EC50PLE04	7750	1321606	Gold .207	10 M Bushed	1.190	12.00"	36° #2	21:39
500 EFI 500 EFI SKS	EC50PL07	8000	1321569	Gold .207	10 M Bushed	1.190	12.00"	36° #2	21:39 20:39
XLT/XLT SP XLT SKS	EC58PL03	8000	1321571	Gold .207	10 M Bushed	1.177	12.00"	34° #2	21:39 20:39
XLT Touring	EC58PLE04	8000	1321642	Gold .207	10M Bushed	1.177	12.00"	34° #2	20:39
600 XCR	EC58PL02	8500	1321626	Blue .207	10MB Bushed	1.177	12.00"	34° #2	21:39
RXL RXL Touring	EC65PL05 EC65PLE05	8000	1321620 1321608	Blue .207	10 AL Bushed	1.177	12.00"	36° #2	20:35 21:39
Storm Storm SKS	EC80PL01	8250	1321607	Blue .207	10-62 Bushed	1.177	12.50"	34° #2	23:37 20:35

TORQUE-O-MATIC DRIVE Data

1995 HIGH ELEVATION RECOMMENDATIONS												
Machine Model	3000 Ft. to 6000 Ft.				6000 Ft. to 9000 Ft.				9000 Ft. to 12000 Ft.			
	Shift Weight	Clutch Spring	Driven Helix	Chain-case Gearing	Shift Weight	Clutch Spring	Driven Helix	Chain-case Gearing	Shift Weight	Clutch Spring	Driven Helix	Chain-case Gearing
StarLite	10M Red	Red/White	36.5° #B-2	15:41	10M Red	Gold	36.5° #B-2	15:41	10M Red	Blue	36.5° #B-2	15:41
Lite GT Lite Lite Deluxe	10M Blue	Gold	36.5° #B-2	16:39	10M White	Gold	36.5° #B-2	16:39	10M White or 10M Red	Blue Gold	36.5° #B-2	16:39
Sport Sport Touring	10	Red/White	36.5° #B-2	16:35 16:39	10	Gold	36.5° #B-2	16:35 16:39	10 or 10M Blue	Blue Gold	36.5° #B-2	16:35 16:39
Super Sport	10 Bushed	Red/White	36.5° #B-2	17:35	10AL Bushed	Gold	36.5° #B-2	17:35	10M Blue Bushed or 10 Bushed	Red/White Gold	36.5° #B-2	17:35
Trail Trail Deluxe	10AL Bushed	Red/White	36° #2	21:39 20:39	10 Bushed	Red/White	36° #2	21:39 20:39	10M Blue Bushed	Red/White	36° #2	21:39 20:39
WideTrak LX	10 Bushed	Red/White	36° #2	19:41	10M Blue Bushed	Red/White	36° #2	19:41	10M White Bushed	Red/White	36° #2	19:41
WideTrak GT	10 Bushed	Red/White	36° #2	19:41	10M Bushed	Red/White	36° #2	19:41	10M Blue Bushed	Red/White	36° #2	19:41
440 Indy 440 SKS	10M White Bushed	Blue	34° #2	21:39 20:39	10M Red Bushed	Blue	34° #2	21:39 20:39	10M Red Bushed	Blue	34° #2	21:39 20:39
440 XCR	10M White Bushed	Blue	34° #2	21:39	10M White Bushed	Blue	34° #2	21:39	10M Red Bushed	Blue	34° #2	21:39
600 XCR	10MW Bushed	Blue	34° #2	21:39	10MR Bushed	Blue	34° #2	21:39	10MR Bushed	Blue	34° #2	21:39
Indy 500	10M Blue Bushed	Gold	36° #2	21:39	10M Blue Bushed	Blue	36° #2	21:39	10M White Bushed or 10M Red Bushed	Blue	36° #2	21:39
Classic 500 EFI	10M Blue Bushed	Gold	36° #2	21:39	10M Blue Bushed	Blue	36° #2	21:39	10M White Bushed or 10M Red Bushed	Blue	36° #2	21:39
500 EFI SKS	10M Blue Bushed	Gold	36° #2	20:39	10M Blue Bushed	Blue	36° #3	20:39	10M White Bushed or 10M Red Bushed	Blue	36° #3	20:39
XLT/XLT SP XLT SKS	10M Blue Bushed	Gold	34° #2	21:39 20:39	10M White Bushed	Blue	34° #2	21:39 20:39	10M Red Bushed	Blue	34° #2	21:39 20:39
XLT Touring	10M Blue Bushed	Gold	34° #2	20:39	10M White Bushed	Blue	34° #2	20:39	10MR Bushed	Blue	34° #2	20:39
RXL	10 Bushed	Blue	36° #2	20:35	10M Blue Bushed	Blue	34° #2 or 36° #3	20:35	10M White Bushed	Blue	34° #2 or 36° #3	20:35
RXL Touring	10 Bushed	Blue	36° #2	21:39	10M Blue Bushed	Blue	34° #2 or 36° #3	21:39	10M White Bushed	Blue	34° #2 or 36° #3	21:39
Storm Storm SKS	10-60 Bushed	Blue	34° #2	23:37 20:35	10-58 Bushed	Blue	34° #2	23:37 20:35	10 Bushed or 10AL Bushed	Blue	34° #2	23:37 20:35

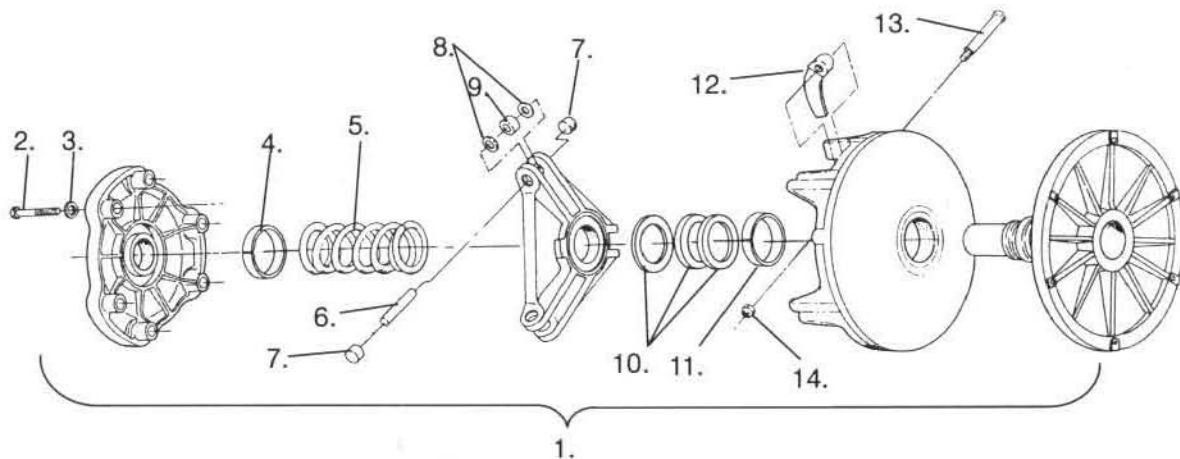
TORQUE-O-MATIC DRIVE **Drive Clutch Service Parts**



Ref.	Part No.	Qty.	Description
1.	**	1	Asm., Drive Clutch Basic
2.	7512265	6	Bolt
3.	7552801	6	Washer, Spring Lock
4.	3576510	1	Cover, Bearing
5.	7710417	1	Ring, Retaining, Cover
6.	**	1	Spring, Clutch
7.	5020436	3	Pin, Roller
	5020422*	3	Pin, Roller
8.	5410374	3	Seal
9.	5430728	3	Button, Guide
	5430728	6*	Button, Guide
10.	5020425	1	Nut, Jam
11.	5430945	6	Washer, Multilube

Ref.	Part No.	Qty.	Description
12.	1321457	3	Asm., Roller & Bushing
	1321622	3	Asm., Roller & Bushing (Storm Only)
13.	5430768	3	Button, Guide
14.	5210754	AR	Spacer, .050mm
	5210753	AR	Spacer, .032mm
	5210752	AR	Spacer, .020mm
15.	**	3	Weight/Bushing
16.	7541906	3	Nut
17.	7512266	3	Bolt
18.	3576502	1	Bearing, Sleeve
	3576503	1	Bearing, Sleeve (Trail w/EC50PM)
19.	5010188	1	Insert, Moveable

* All other P-85 Basic except 500 90/91



Ref.	Part No.	Qty.	Description
1.	1321523	1	Asm., Drive Clutch Basic
2.	7512265	6	Bolt
3.	7552804	6	Washer, Split Lock (6mm)
4.	3576510	1	Cover, Bearing
5.	7041061	1	Spring, Clutch (Brown)
6.	5020422	3	Pin, Roller
7.	5430728	6	Button, Guide
8.	5430945	6	Washer, Multilube
9.	1321457	3	Asm., Roller and Bushing

Ref.	Part No.	Qty.	Description
10.	5210754	AR	Spacer, .050mm
	5210753	AR	Spacer, .032mm
	5210752	AR	Spacer, .020mm
11.	3576504	1	Bearing, Moveable 1/2"
12.	5630272	2	Shift, Weight (10)
13.	7512266	3	Bolt, Shoulder
14.	7541906	3	Nut, Flex Loc