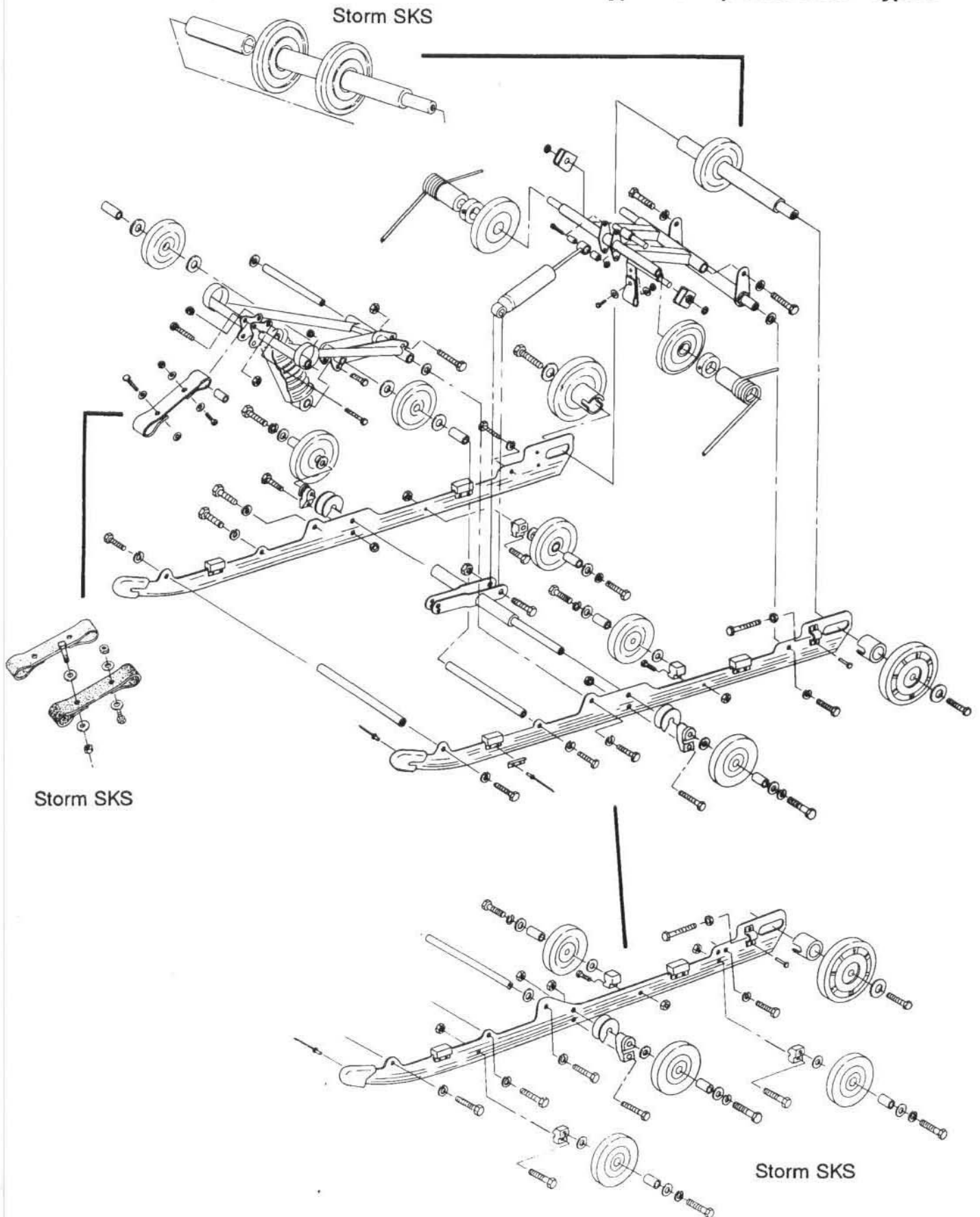
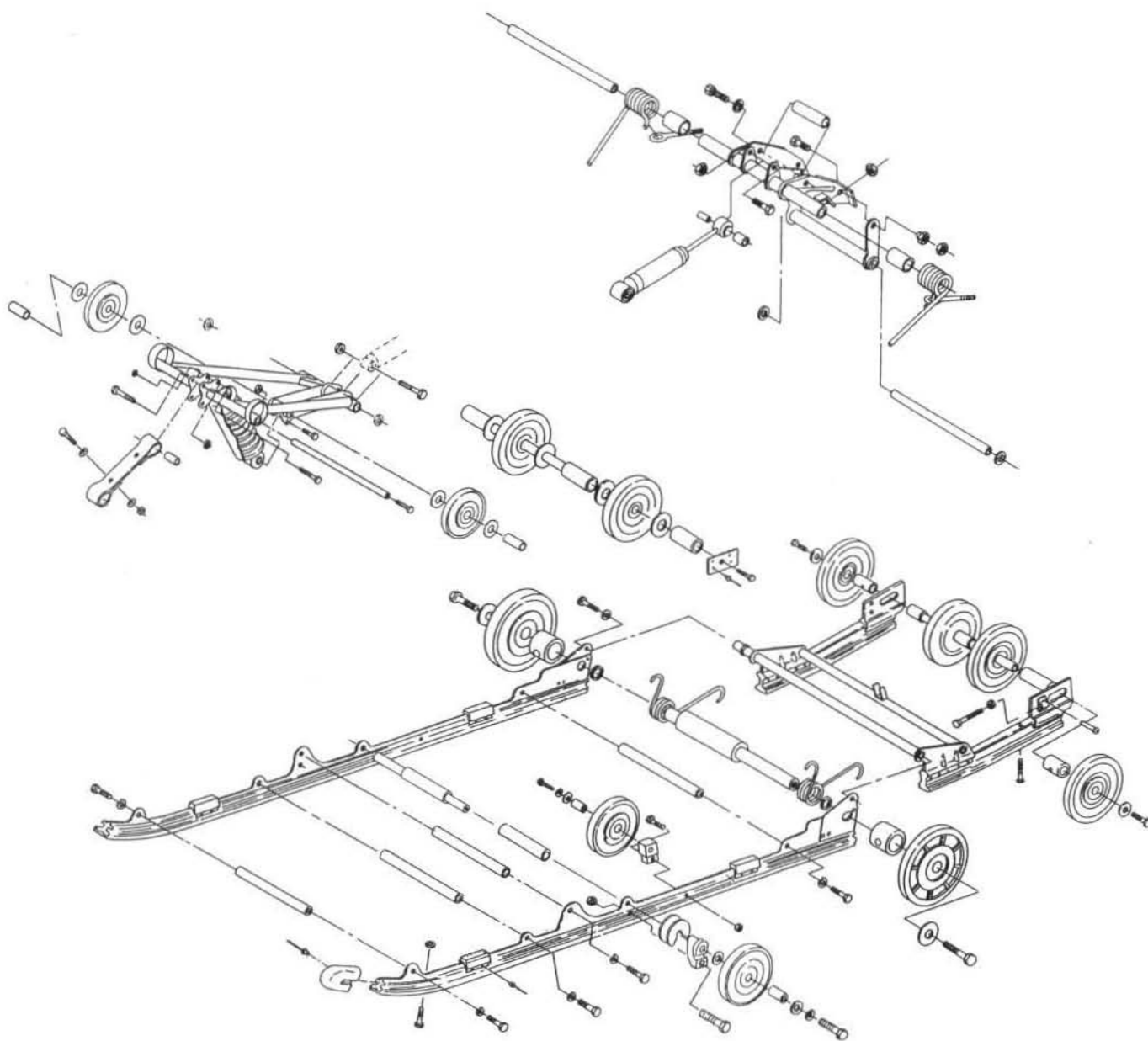


SUSPENSIONS Type ITS Exploded View - Type II



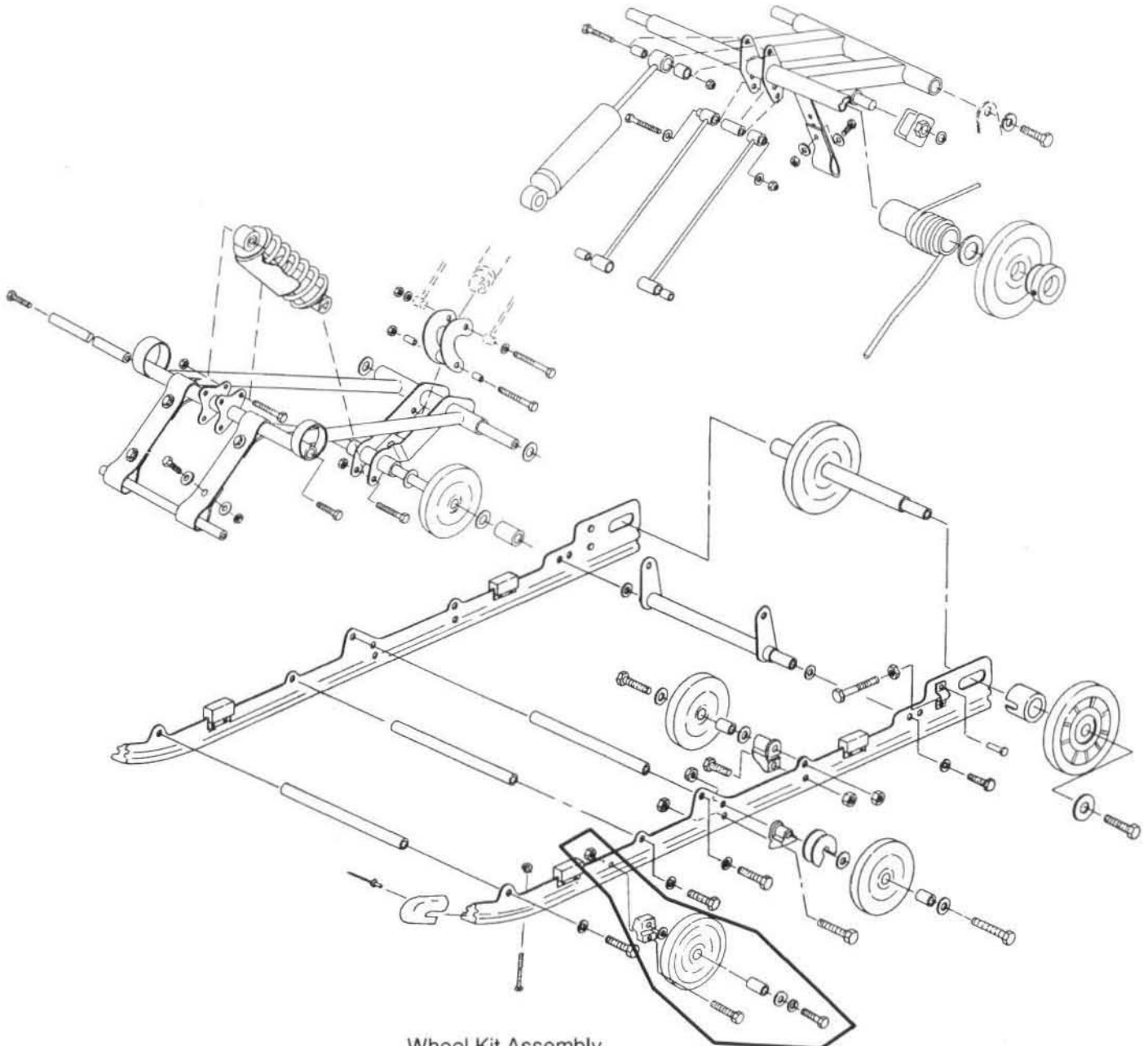
SUSPENSIONS
XXIII - Exploded View



**Reference Type XV Suspension for
Adjustments Page 9.28**

SUSPENSIONS XC-100 Exploded View

The XC-100 rear suspension combines the best of the ITS and XCR suspensions. It provides improved steering, reduced ski lift for more positive handling in the corners, and improved driveability in deep snow conditions. The front torque arm is longer, with tunnel mounting of the suspension 1" (2.5 cm) further back than the ITS. The XC-100 utilizes rails and rear scissors with shock linkage rods similar to the XCR. The shock linkage rods insure maximum performance of the shock. The XC-100 suspension has the option of changing shock position on the upper rear mount. Repositioning the shock changes its action, having much the same effect as re-valving the shock softer.



Wheel Kit Assembly
PN 2871073 (1 Kit per Suspension)

Use of the optional wheel kit is recommended in areas where snow conditions are marginal and snow is hard packed. Occasional snow dipping of the rail is advised for lubrication of hi-fax in hard pack conditions.